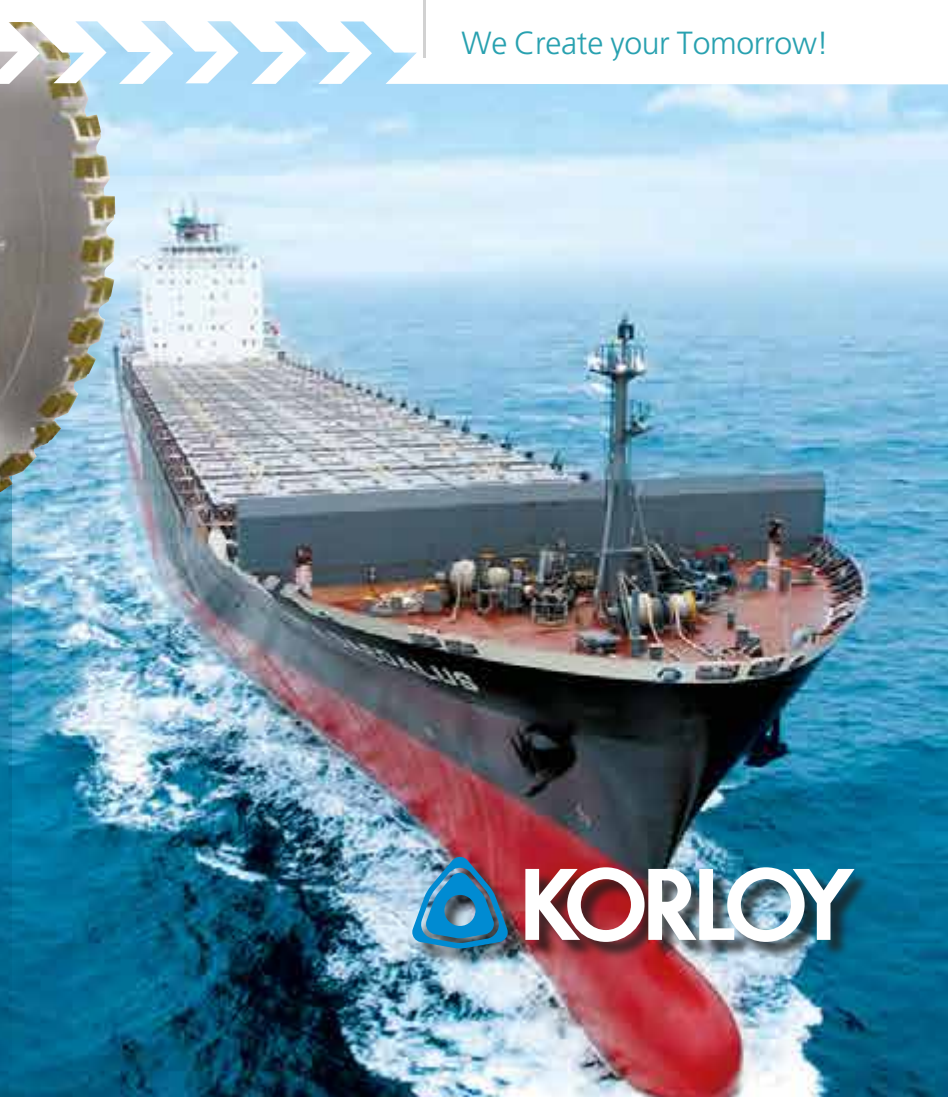


Industrial Solutions of
KORLOY



SHIPBUILDING INDUSTRY

We Create your Tomorrow!



 **KORLOY**



We learn the challenge with nature.
We also dream love in nature.
'Challenge for dream, Love for human'
It's an ideal of Korloy like nature.

The 21st century of KORLOY is the power for a better future.

KORLOY Inc. is a total cutting tool manufacturer specializing in uncoated, coated (CVD, PVD), and Cermet inserts.

KORLOY Inc. was founded in 1966.

Our establishment is now a top leading cutting tool provider that constantly invests and improves our R&D center in Korea

Our goal is to be the top, globally leading company that overcomes the continuous challenges and innovations.

KORLOY Inc. products manufactured by the ever growing R&D department along with our innovative production technology are selling and exporting to over 80 countries, as the global company recognized with higher technology.

KORLOY Inc. continuously endeavors to grow as the global enterprise representing Korea.

We sincerely anticipate your on-going interest for KORLOY Inc.





SHIPBUILDING INDUSTRY

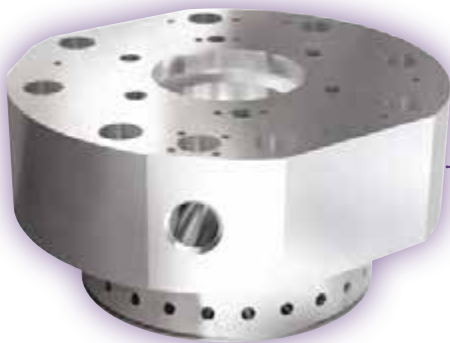
The shipbuilding industry, which has been around for as long as the human beings' history, has been tremendously developed during the past 100 years; accordingly as to the growing volume of world trade. Korloy provides safe and innovative solutions for high-tech machining for shipbuilding structures such as cylinder blocks, cylinder covers, crank shafts, crank cases, propellers, and etc.



INTRODUCTION OF SHIPBUILDING ENGINE PARTS



Cylinder Block

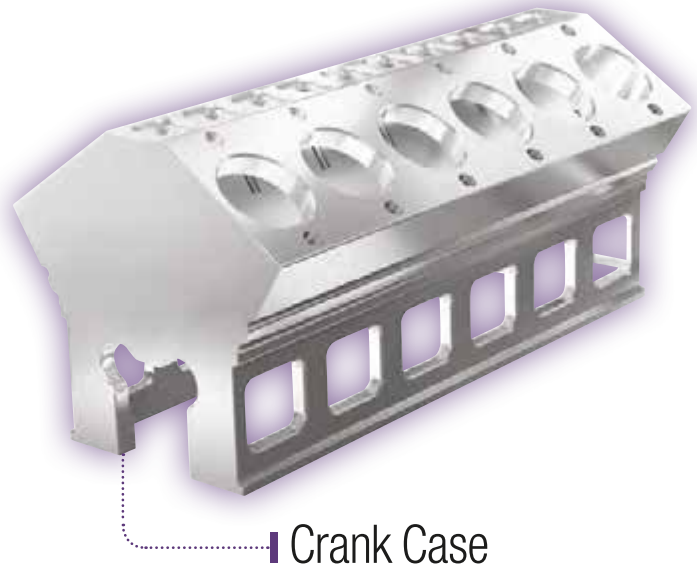
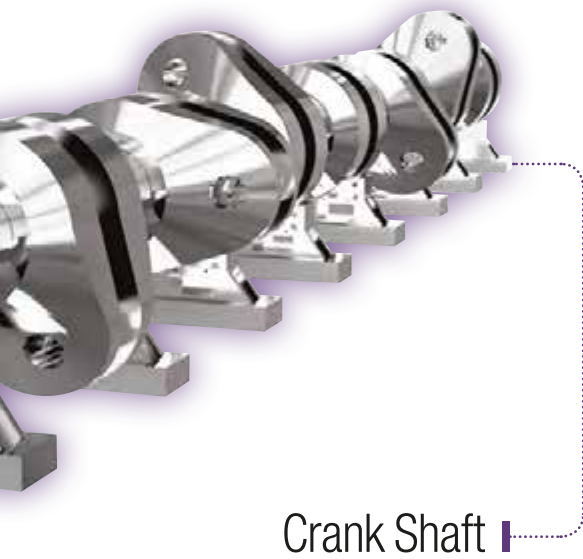
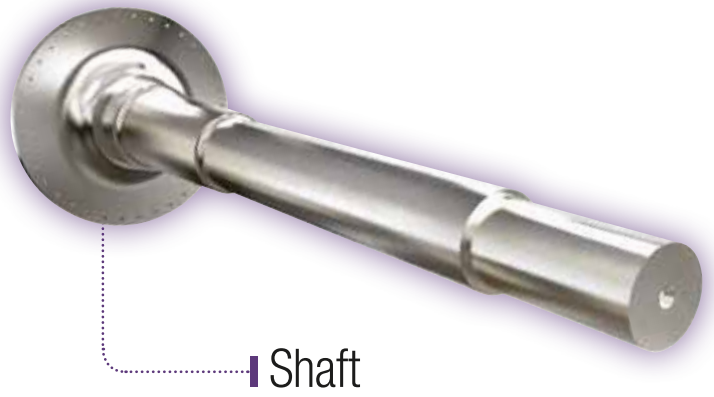


Cylinder Cover



Piston Head





Cylinder Block

Cast Iron, Steel

1

Power Buster/
Special Facing Cutter <PBZ>

[Top & Bottom Plane]
: Roughing/ Finishing

2

Indexable Drill <King Drill>

[Cylinder Block Hole]
: Centering & Drilling

3

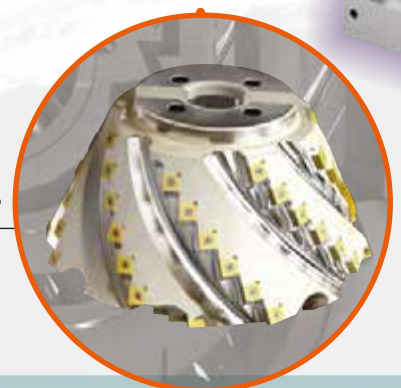
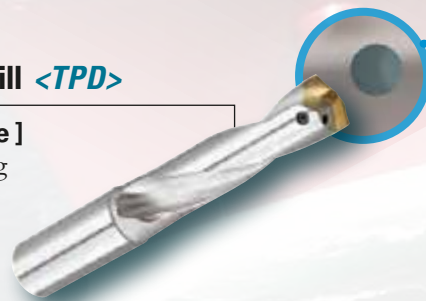
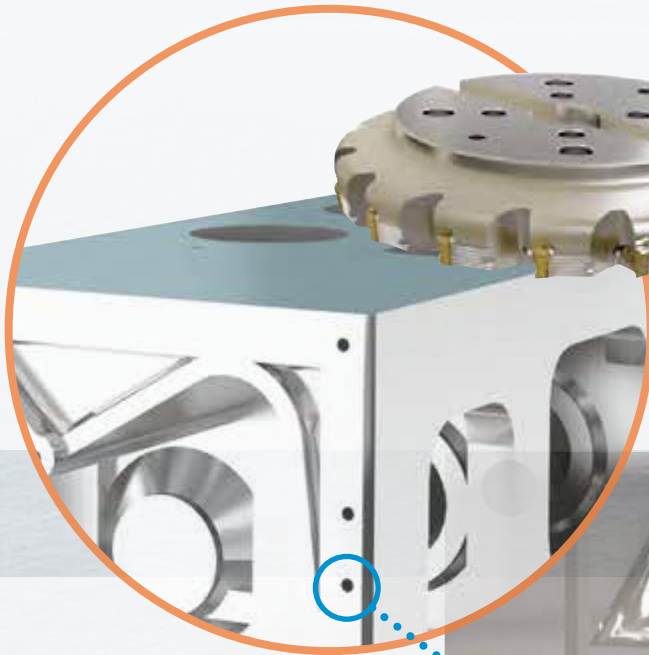
Exchangeable Drill <TPD>

[Cylinder Block Hole]
: Centering & Drilling

4

Special Form Cutter

[Bearing Cap Seat]
: Special form machining





5

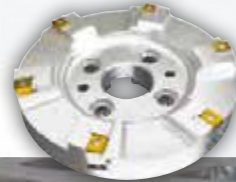
**Balance Cutter
for Big Hole Boring**
<TBC, FBC>

[Cylinder Liner Bore]
: Internal & Special Boring

6

**Rich Mill / Adjustable Special
Facing Cutter <RM8>**

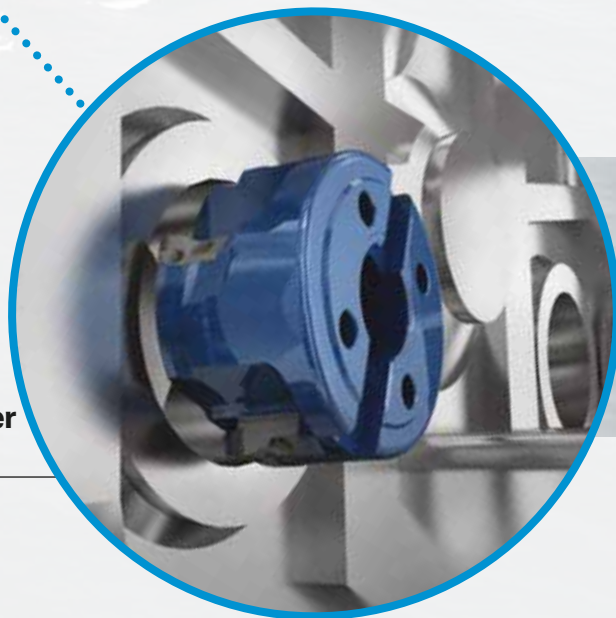
[Side Milling of Block]
: Roughing & Finishing



7

Special Boring Cutter
<Boring Cutter>

[Cylinder Bore]
: Roughing & Finishing



Cylinder Cover /Piston Head

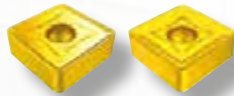
Carbon Steel / Cast Iron

1

Heavy Inserts <VH/VT>

[Top & Bottom Plane]

: Facing & External Turning



2

Special Indexable Drill <WPDC>
Mach Drill <MSDH>

[Cylinder Cover & Piston Head]

: Centering & Drilling

> Cylinder Cover

3

Rich Mill <RM8>

[Cover]

: Roughing & Finishing



4

Mach Long Drill <MLD>

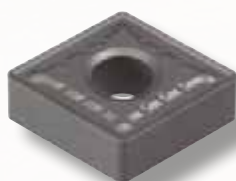
[Piston Head]
: Deep hole Drilling

> Piston Head

5

Double Clamp Holder with Inserts
External Turning <NC6210>

[Head]
: Roughing & Finishing



6

Special Holder <TB Insert>

[Piston Ring]
: Grooving at
piston ring



Crank Shaft

Forged Steel

1

Special Pin Miller

[Pin, Journal]

: Special Chasing & Grooving

2

Indexable Step Drill

[Finishing at the End of Flange]

: Big Step Hole Drilling at the end of flange

3

Rich Mill <RMT>

[Finishing at the End of Flange]

: Facing for roughing and finishing at the end of flange

SHIPBUILDING INDUSTRY




4 Mach Drill <MSDH>
Exchangeable Drill <TPDB>
Indexable Drill <KING DRILL>

[Oil Hole]
: Drilling



5 Special Side Miller

[Journal Side]
: Special machining for
roughing



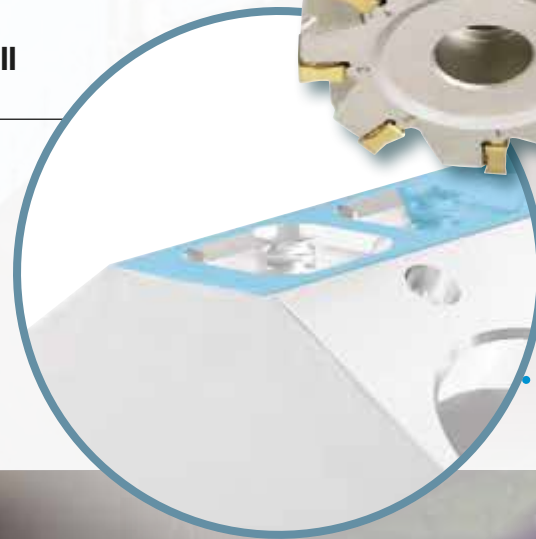
Crank Case

Cast Iron

1

Rich Mill / Alpha Mill
<RM8 / Alpha Mill>

[CaseTop]
: Roughing and
finishing for top surface
facing



2

Power Buster <PBA, PBZ>

[Front & Rear plane]
: Heavy duty Milling



3

Special Form Cutter

[Bearing Cap Seat]
: Special form machining



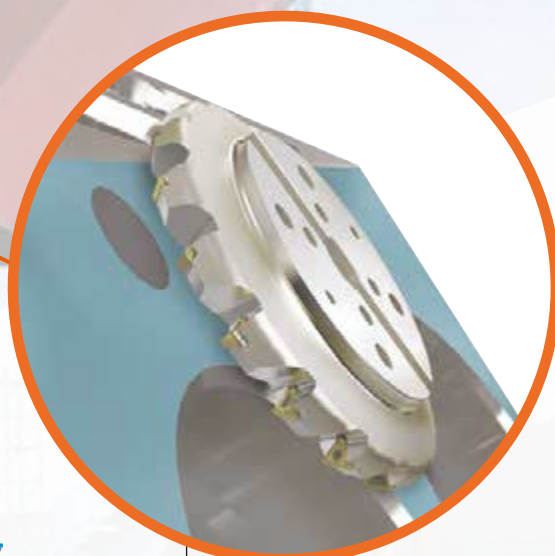
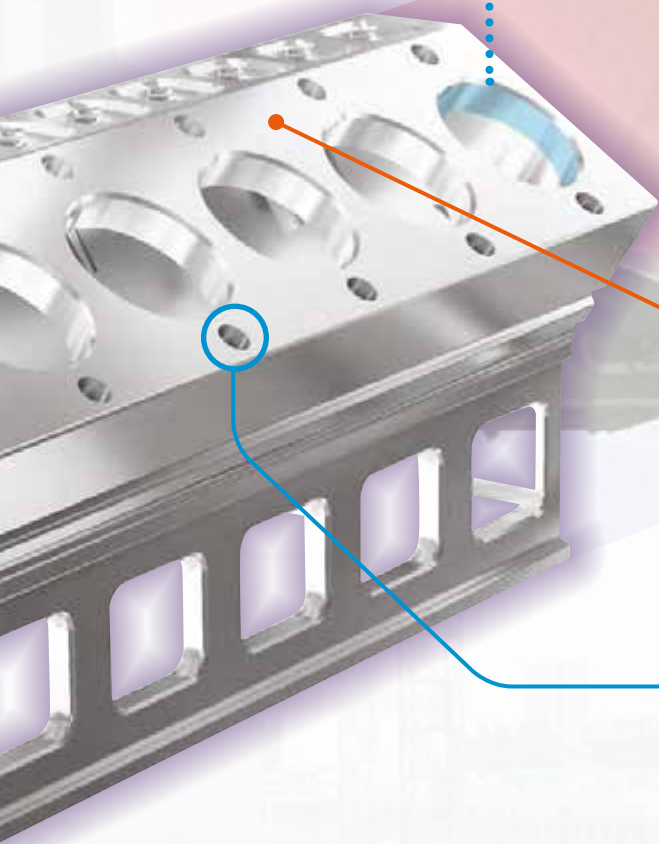


4

Balance Cutter for Big Hole Boring

[Cylinder Bore]

: Special boring: Roughing & Finishing



6

Power Buster <PBA> Rich Mill <RMT>

[Case Head Deck]

: Roughing and finishing for
case head deck facing

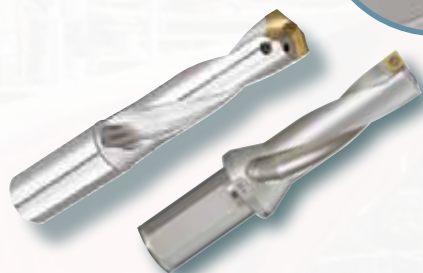
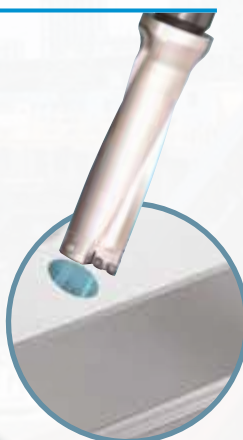


5

Special Indexable Drill Exchangeable Drill <TPD> Indexable Drill <KING DRILL>

[Case Hole]

: Drilling for small to big diameter



Propeller

Copper Cast Iron

1

Forming <Face Cutter>

[Propeller Blade]

: Ramping & Copying
(Roughing & Finishing)



3

HRMD <HRM Double>

[Propeller Boss]

: Facing
(Roughing & Finishing)

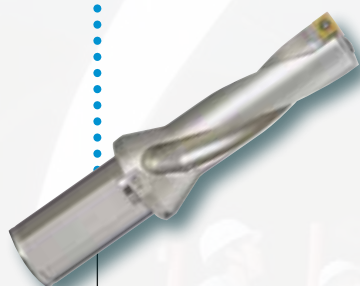


2

Indexable Drill <KING DRILL>

[Propeller Hole]

: Drilling



4

Special Edge Miller

[Propeller Edge Plane]

: Special edge milling



Shaft

Alloy Steel

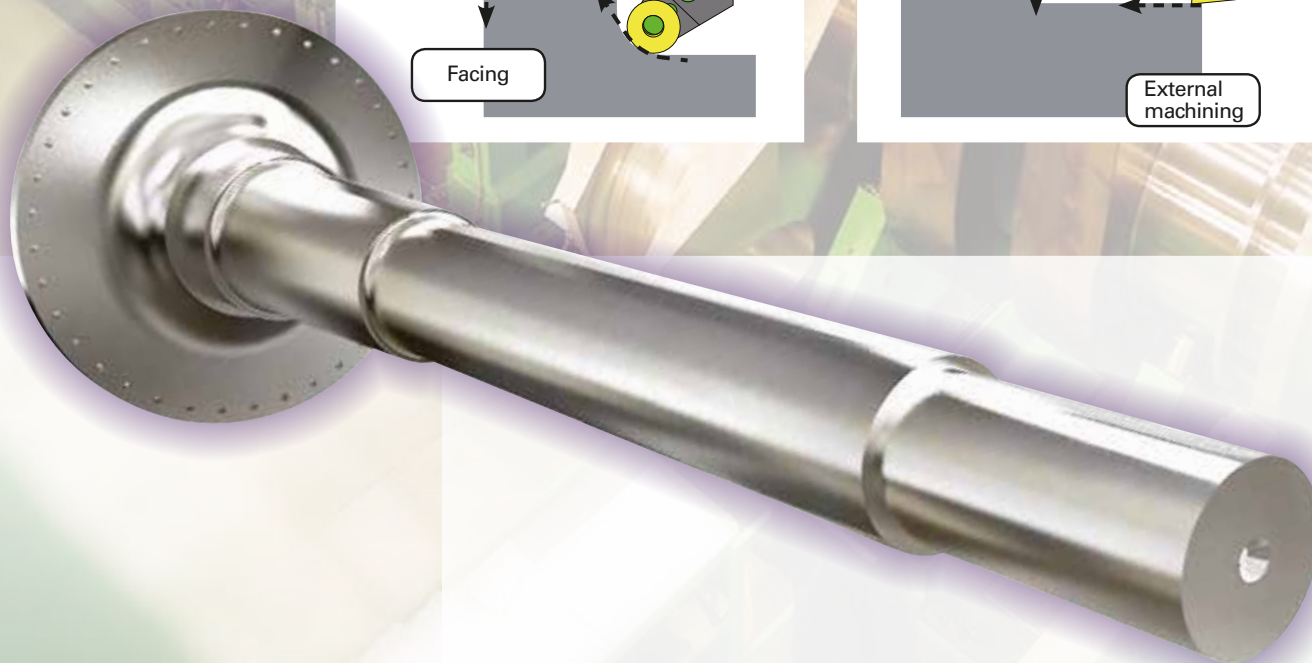
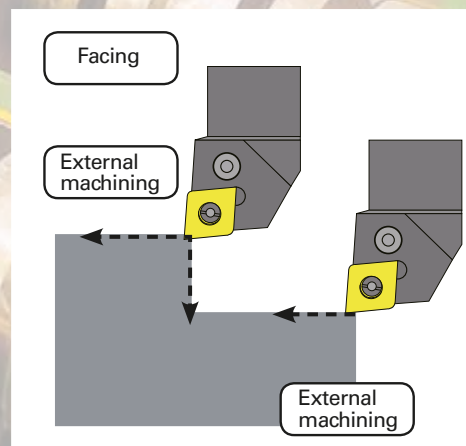
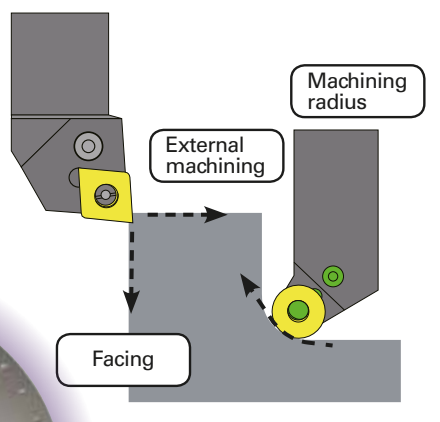


Inserts for Heavy Duty Machining <VH/VT>

1

[Shaft External / Profile]

:Turning for heavy duty machining



**Head Office**

Holystar B/D, 1350, Nambusunhwan-ro, Geumcheon-gu, Seoul, 153-823, Korea
Tel : +82-2-522-3181 Fax : +82-2-522-3184, +82-2-3474-4744
Web : www.korloy.com E-mail : export@korloy.com

Cheongju Factory

55, Sandan-ro, Heungdeok-gu, Cheongju-si,
Chungcheongbuk-do, 361-290, Korea
Tel : +82-43-262-0141 Fax : +82-43-262-0146

Jincheon Factory

54, Gwanghyewonsandan 2-gil, Gwanghyewon-myeon, Jincheon-gun,
Chungcheongbuk-do, 365-831, Korea
Tel : +82-43-535-0141 Fax : +82-43-535-0144

R & D Institute

55, Sandan-ro, Heungdeok-gu, Cheongju-si,
Chungcheongbuk-do, 361-290, Korea
Tel : +82-43-262-0141 Fax : +82-43-262-0711



620 Maple Avenue, Torrance, CA 90503, USA
Tel : +1-310-782-3800 Toll Free : +1-888-711-0001 Fax : +1-310-782-3885
www.korloyamerica.com E-mail : sales@korloy.us



Heinrich-Lanz-Allee 12, 60437 Frankfurt am Main, Germany
Tel : +49-69-5069-887-0 Fax : +49-69-5069-887-29
www.korloyeurope.com E-mail : sales@korloyeurope.com



Ground Floor, Property No. 217, Udyog Vihar Phase 4, Gurgaon 122016, Haryana, INDIA
Tel : +91-124-4050030 Fax : +91-124-4050032
www.korloyindia.com E-mail : sales.kip@korloy.com



Av. Aruana 280, conj.12, WLC, Alphaville, Barueri, CEP06460-010, SP, Brasil
Tel : +55-11-4193-3810
E-mail : vendas@korloy.com



Ground Dongjing Road 56 District Free Trade Zone. Qingdao, China
Tel : +86-532-86959880 Fax : +86-532-86760651
E-mail : kimyc@korloy.com